

## Installation guide !myPlan



**VERSION 1.0**

© JV-Soft 2010

# CONTENT

- System Requirements ..... 3
  - Single place installation..... 3
  - Network Installation..... 3
- Installation..... 4
  - Single place installation..... 4
  - Network Installation..... 5
    - Basic Information's..... 5
    - Requirements..... 5
    - Perform Installation..... 5
- Known Problems..... 12
  - Error while starting !myPlan at a Workstation ..... 12

# SYSTEM REQUIREMENTS

## SINGLE PLACE INSTALLATION

To work with !myPlan on a single place you need at least:

- A PC Pentium with at least 1 GB main memory (We recommend at least a PC Pentium IV with minimum 2 GB of main memory)
- MS-Windows XP, Vista or Windows 7
- A hard disk with minimum 40 MB of free space
- A screen resolution of 1024 x 768 or higher
- A MS-Windows compatible mouse
- A installed printer if printing is necessary
- The Microsoft .Net-Framework Version 2.0 or higher (already pre-installed from MS-Windows XP Service and higher).

## NETWORK INSTALLATION

The network installation is differed into two installations:

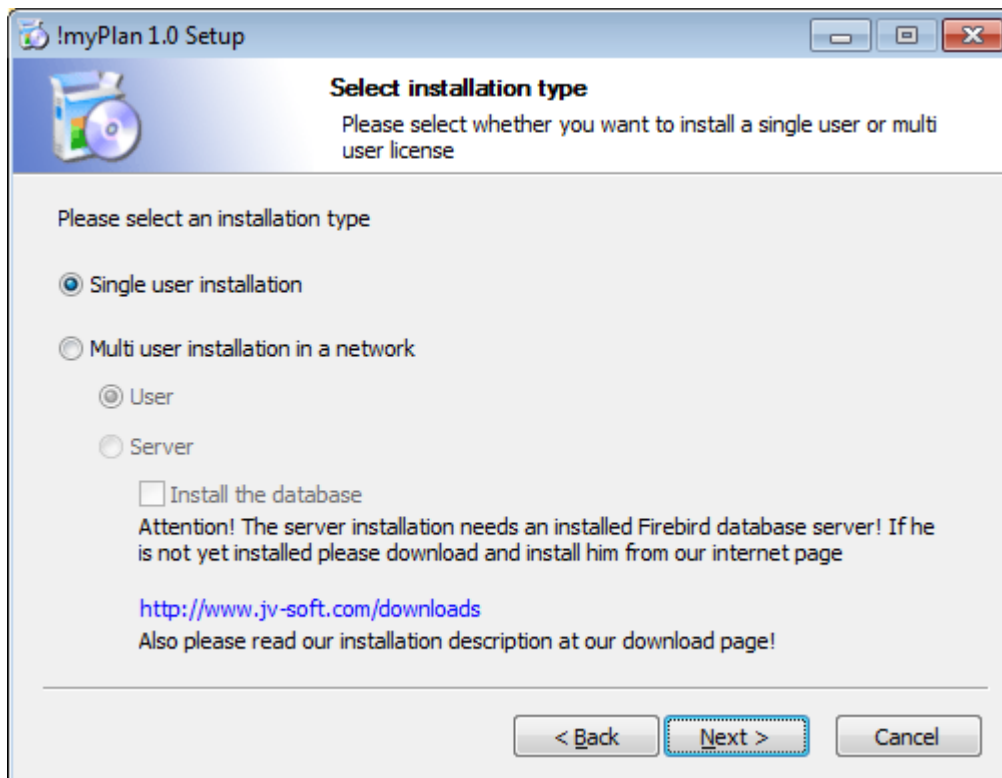
- Workstation: Same system requirements as for single place installation.
- Server: For the installation of the server you need at least:
  - A PC Pentium with at least 1 GB main memory (We recommend at least a PC Pentium IV with minimum 2 GB of main memory)
  - One of the following operating systems:
    - MS-Windows 2000, XP, Vista, Windows 7 either 32 or 64 Bit as present
    - Linux x86, Linux AMD64
    - MacOSX
    - Solaris (Sparc 64)
  - A installed Firebird Database-Server Version 2.0 or higher
  - Network: recommended 100 Mbit/s or higher
  - Recommended: Don't use FAT32 as file system but NTFS, as FAT32 can only handle files up to 4 GB!

# INSTALLATION

## SINGLE PLACE INSTALLATION

With !myPlan an installation program is delivered with which a single place and a network installation is possible.

After starting the installation program, selecting the installation language and the acceptance of our license agreements you are prompted to select the installation type (either single or network installation). Single place installation is pre-selected:



At the next step you are prompted to select your installation folder.

**ATTENTION:** It is recommended NOT to select the folder „C:\Programs\...“, but to select a folder outside the windows default program folder, e.g. „C:\myPlan“. Since the adoption of Windows Vista the administration of installed programs under „C:\Programs\...“ has changed !myPlan needs full access to the installation folder which is not possible when you're not firm with the user management of Windows Vista and higher!

Once the installation folder is selected, !myPlan can be installed. After installation a program icon is available for starting !myPlan.

If you get any error message on the first start of !myPlan, you'll find more information's in the chapter „[Known problems](#)“ on possible problems and their solutions.

## NETWORK INSTALLATION

### *BASIC INFORMATION'S*

With !myPlan you are able to work and share the same data (schedules etc.) from different work places and with different users.

For this it is necessary to install a server which holds and administrates the data and to which all workstations of the users can connect via a network. On the workstations of the users the program files of !myPlan will be installed.

### *REQUIREMENTS*

To work with and connect to !myPlan in a network a server is necessary. This server has to act exclusively as a server and should not be used as a workstation! Furthermore the server should be embedded into a backup strategy, so that the data of !myPlan will be saved continuously!

On this server a so called database-server has to be installed. This database-server is necessary for data management and communication between server and workstations. The database-server is a software program and will be installed as a service and automatically started on windows startup. !myPlan uses [Firebird](#) as database-server. This database-server is **NOT** included in the installation program of !myPlan but is available as separate download on our internet site or directly on the internet site of [Firebird](#).

Firebird itself doesn't recommend license fees as the server is completely free! Furthermore Firebird is also available for other operating systems, e.g. Linux. For installation on other operating systems you have to directly download the installation packages on the internet site of [Firebird](#).

The connection to the database-server is served through the TCP/IP protocol. This standard protocol must be available on the server and on all workstations which need access to the server.

Furthermore you need an adequate number of network licenses of !myPlan to work in a network. It is not possible to work in a network with the single user license!

The number of access licenses is depending on the number of users which will connect to the database at the same time and not depending on the number of installed !myPlan licenses. For example, if you grant 10 users general account to the database, but know that maximum 5 users will connect simultaneously, you need only 5 network licenses and not 10. But if a user number 6 will try to connect to the database, the connection will be prohibited as long as one of the other 5 users will disconnect from the database.

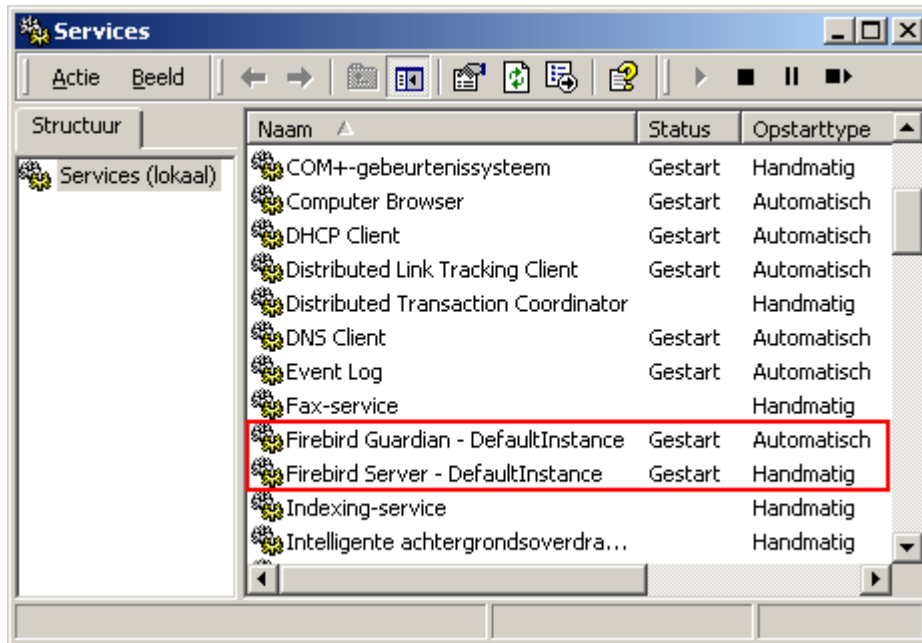
### *PERFORM INSTALLATION*

For installation of the network version 2 installation steps are necessary:

1. Installing the database-server

If Firebird is not yet installed on the server, Firebird must be installed first.

If you don't know whether Firebird is already installed, you can prove it yourself via the service management of windows. Open Control Panel -> Services (NT) or Control Panel -> Administrative Tools -> Services (2000/3/8, XP, Vista, 7). You'll get a list of all started services. Firebird is such a service. If the following entries are available in the list, Firebird is already installed. This illustration shows the Services applet display on Windows 2000. The appearance may vary from one Windows server edition to another. Also, service names may vary with the Firebird version:



a. Installing Firebird under MS-Windows

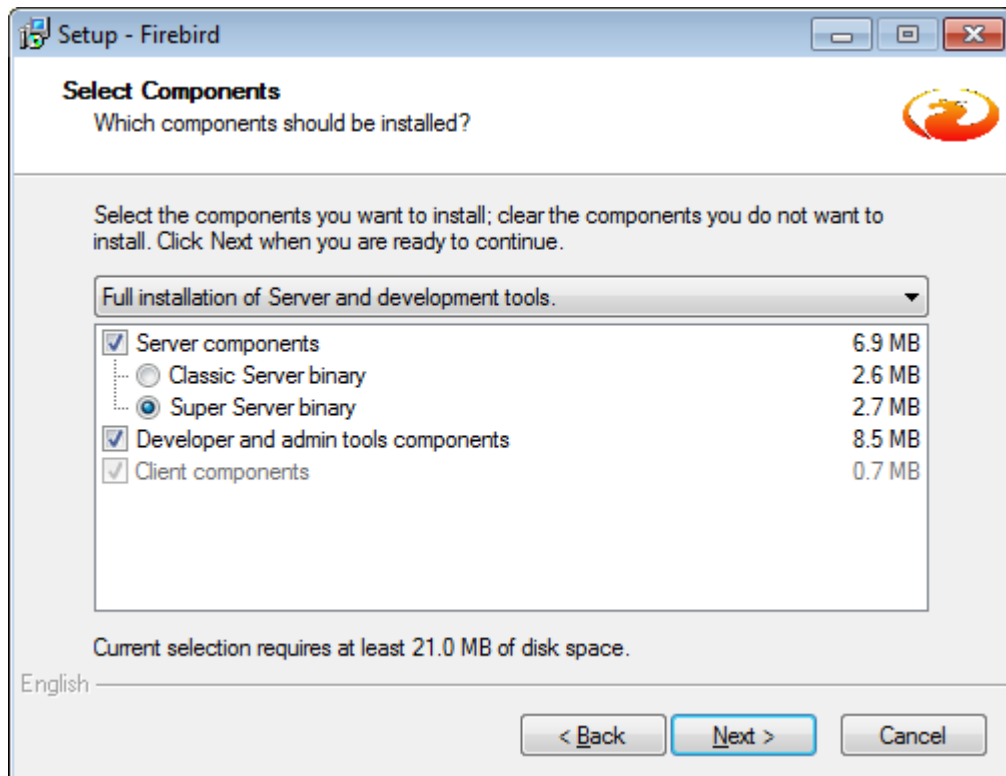
The installation program of !myPlan does **NOT** include installation of the Firebird-Server directly, as it has to include both, 32 bit and 64 bit installations, which will amount in a very large installation file. In fact both installation version for windows - 32 bit and 64 bit - are available on our download site "<http://www.jv-soft.com/downloads>".

**IMPORTANT:** The installation program for Firebird must be started on the server!

After starting the installation program for the Firebird server, selecting the installation language, the welcome page and the acceptance of the license agreements you get some advices and will be prompted to select the installation folder. Only change the default settings for the installation folder because of an important reason. We recommend leaving the settings as they are!

Afterwards you can select different settings. In every case install the Firebird server as a "Super Server" as set by default!

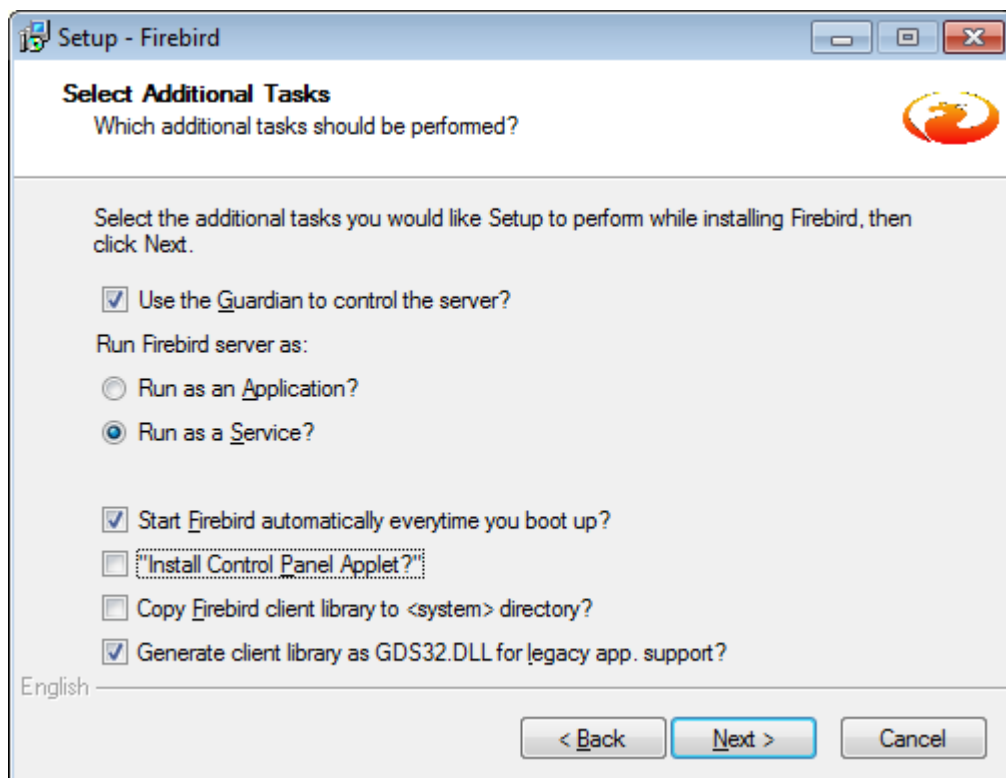
**Recommendation:** Don't change the default settings!



Afterwards you have the possibility to customize the program symbol.

**Recommendation:** Accept the default settings!

Now further settings are requested:



**Recommendation:** In every case use the Firebird service to start automatically with Windows and use the guardian to control the server.

So again: Accept the default settings!

More detail information's for installing the Firebird server you can find at <http://www.firebirdSQL.org>

**ATTENTION:** If you use a firewall, the Firebird database needs access!!

Furthermore it is recommended, not to scan the database via an anti-virus program, because this will slow down the performance! Exclude either our database "myPlan.fdb" or generally all files ending "fdb" from scanning.

After installation under MS Windows Vista or MS Windows 7 it is possible that the service doesn't start automatically. In this case start the service manually for the first time. After restarting the server the service should always be automatically started.

b. Installation of Firebird under other operating systems

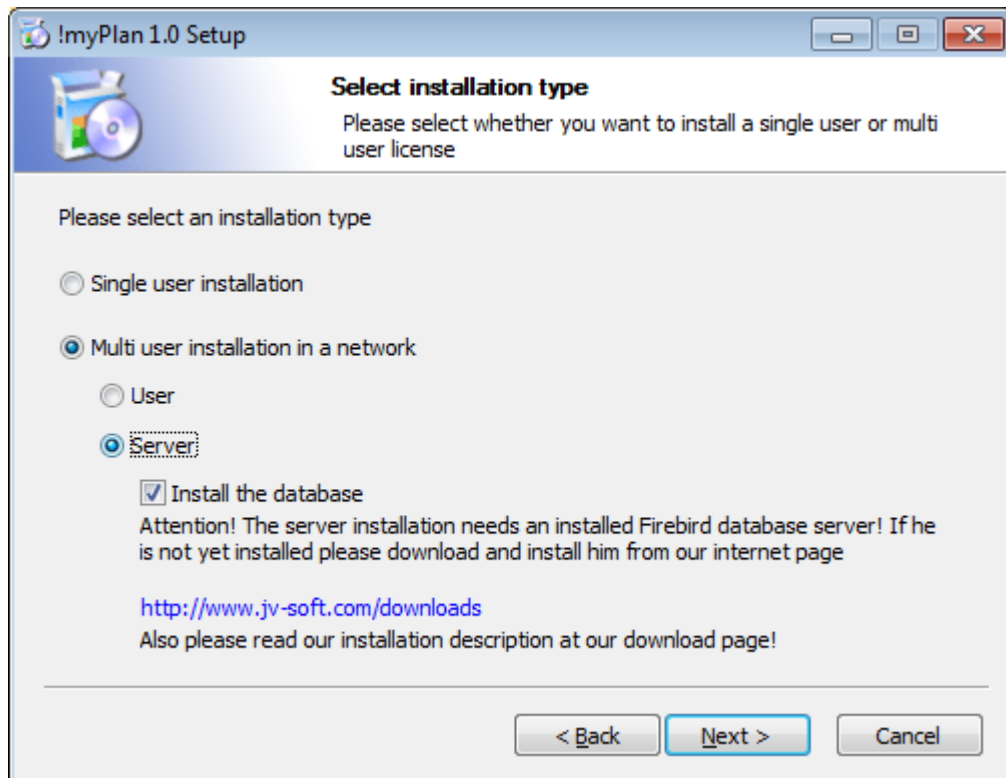
It is also possible to install Firebird on other operation systems like Linux. You **do not** find the special installation programs for such operation systems at our homepage but directly at the homepage of Firebird <http://www.firebirdSQL.org>.

**ATTENTION: We DON'T offer support for other operating systems than MS Windows!**

After installing the Firebird server on other operating systems than MS Windows you have to move the database manually to that server. The easiest way to do this is to install the database on an MS Windows system (-> c. Installing the database) and then copy the database from there manually to the Linux etc. server and modify a settings file (-> d. Manually setup the database)

c. Installing the database

To install the database on the server just start the installation program of !myPlan on the server! As installation type select "Multi user installation in a network" and "Server":



Afterwards select the installation folder **on the server**. Now the database will be copied into that folder and a file will be created there. You get more informations in the next chapter "d. Manually setup the database".

#### d. Manually setup the database

Meanwhile the installation of the database to the server the database file will be copied to the selected folder. The name of the database file is "myplan.fdb".

For accessing the database from the workstations a separate file named "myplan.ini" is written by the installation program. This file includes the access information's to the database. It can be opened and edited with an ASCII-Editor like "Notepad". ATTENTION! DO NOT open it with MS Word or another word processing program!

The file includes the following entries:

```
[DBInfo]
DBServer=servername
DBFile=D:\myPlan\myPlan.fdb
```

If you install the database on an operating system other than MS Windows you have to manually change the settings!

**DBServer:** This entry includes the **machine name of the server**, on which Firebird is installed. The name can be identified via " Control Panel -> Settings – System Control – System" and corresponds to the **computer name**.

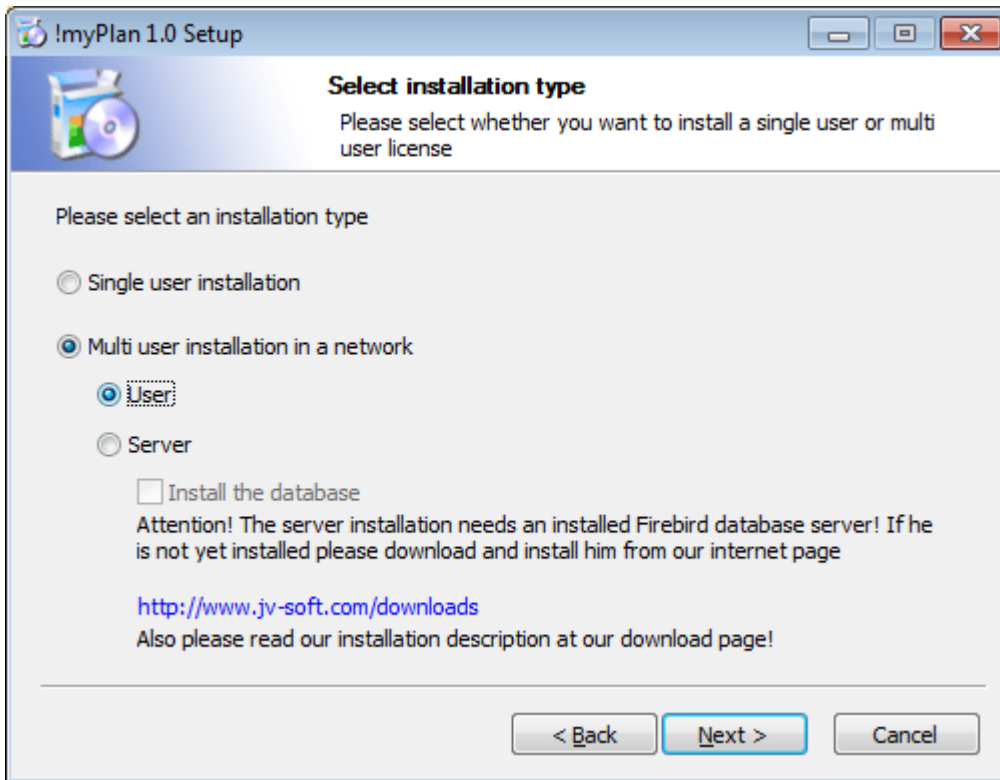
**DBFile:** Includes the path and the name of the database.  
ATTENTION! The path corresponds to the **folder path at the server** and **NOT** a mapped directory! That means that it has **NOT** to be a relative path from the sight of the

workstation!

ATTENTION: The directory which includes the database has to be released for common use in the network!

## 2. Installing the workstations

At every workstation that needs connection to the database !myPlan must be installed. At the installation program of !myPlan therefore select "Multi user installation in a network" and "User":



ATTENTION! For working with !myPlan in a network you need an appropriated amount of network licenses!

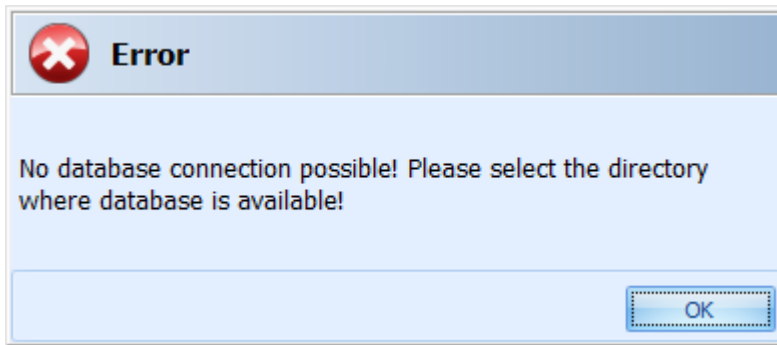
For connecting to the database in the network a local file including the connection information's will be created at every workstation:

"!myPlan.set"

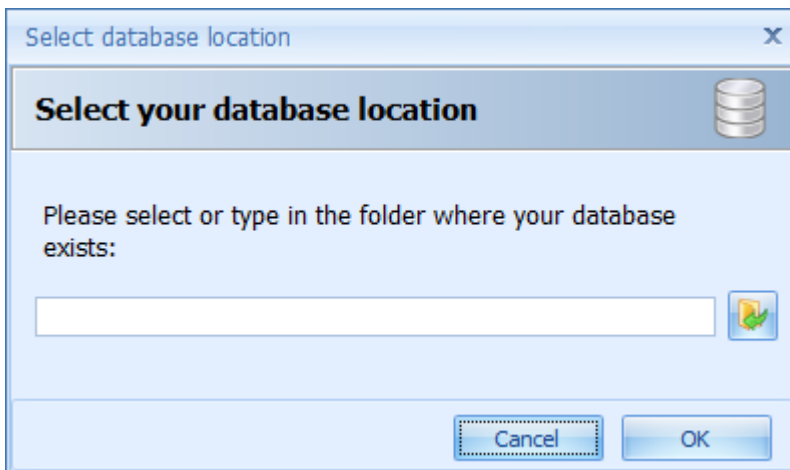
This file corresponds to the file "myPlan.ini" at the database-server:

```
[DBInfo]
DBServer=servername
DBFile=D:\myPlan\myPlan.fdb
```

After the installation and the first start of the workstation you will be prompted to select the database if the entries in the file "!myPlan.set" do not correspond with the database:



and:



There are 2 possibilities to select the database in the network:

- You have already mapped a drive with the server:

Select the folder in which the database is located. The file "!myPlan.set" will be written.

After that the mapped drive is no longer necessary for connection to the database! Connection is done via the computer name of the server!

- or no drive is mapped:

Exit !myPlan and edit the file "!myPlan.set" manually as described at " Manually setup the database".

# KNOWN PROBLEMS

## ERROR WHILE STARTING !MYPLAN AT A WORKSTATION

- If you'll get an error message while starting !myPlan like  
'The application cannot be initialized (0x0000135)'  
probably the needed Microsoft Framework 2.0 is not installed on your computer. You can download it from our internet site.
- If you have problems to connect to the database in the network like "Database not found", please check the following:
  - Has Firebird service been started on the server?
  - Can you reach the server?
  - Is the connection blocked by the firewall? Deactivate the firewall to test and try again.
  - Proof the entries in the files "!myPlan.set" at the workstation and "myPlan.ini" at the server